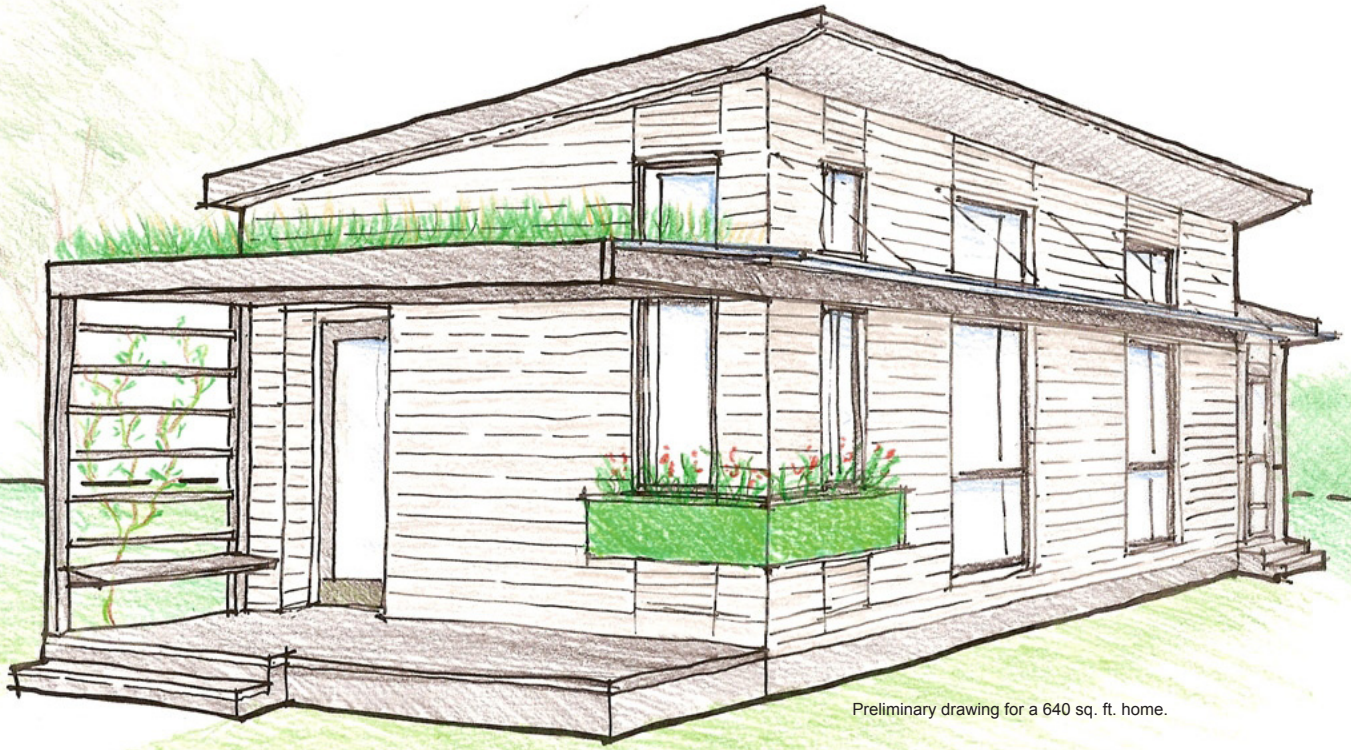


# Casa Kit Homes

Madison Environmental Group's latest research and development project



Preliminary drawing for a 640 sq. ft. home.

## Our Vision

Casa Kit Homes will provide a radical\* green living solution for people who want to simplify and live lightly on the earth. Homes will range in size from 600 sq. ft. (1-bedroom) to 1200 sq. ft. (4-bedroom) and will include solar systems, water cisterns, and Fullcircle Furniture.

## Your Gain

You will live more by owning less. When you live in a smaller, smarter space, you can save for culture and travel as you spend less on utility bills. You will reduce your ecological footprint, making it easier for everyone to share the planet.

You will feel connected even if you live alone because you will be a member of the Casa Kit community—pioneers of green living who will share information and resources.

\*Radical comes from the latin word, radix, meaning rooted as in down to earth, connected, grounded.



[www.madisonenvironmental.com](http://www.madisonenvironmental.com)  
25 N. Pinckney St.  
Madison, WI 53703  
608-280-0800  
[sonya@madisonenvironmental.com](mailto:sonya@madisonenvironmental.com)

# Casa Kit Homes

Madison Environmental Group's latest research and development project

## Live Lightly.

Casa Kit Homes will be 50–75% smaller (and much smarter) than the average new American home.\* Our design and construction will provide:

### A Reduced Ecological Footprint

- Passive heating and cooling
- Water conservation systems
- Regional, natural, and salvaged building materials
- Edible and native landscaping

### A Warm and Welcoming Space

- An abundance of natural light in every room
- One foot thick walls, providing warmth and coziness
- A focused relationship with the outdoors
- An inviting and functional entry
- A space designed for entertaining and overnight guests

### A Flexible and Efficient Home

- Cost-conscious construction
- Dual function furniture and space, including ample storage
- Adaptable to changing needs
- Option for accessibility
- Option for pet-friendly features

\*In 2004, the size of the average American home was 2400 sq.ft.



[www.madisonenvironmental.com](http://www.madisonenvironmental.com)  
25 N. Pinckney St.  
Madison, WI 53703  
608-280-0800  
[sonya@madisonenvironmental.com](mailto:sonya@madisonenvironmental.com)

# Casa Kit Homes

Madison Environmental Group's latest research and development project

FIVE ROOMS – NEAT PORCH



Casa Kit Homes are inspired by the historic Sears Roebuck kit homes of the 1920s.

In 1950, the average American home was 983 sq. ft.

In 2004, the average size grew to 2,349 sq. ft. This compares to 815 sq. ft. in the United Kingdom and 1000 sq. ft. in Japan.<sup>2</sup>

The average American house releases 22,000 pounds of CO<sub>2</sub> annually.<sup>3</sup> A typical U.S. household consumes 11,000 kwh of electric power per year.<sup>4</sup> The average Japanese household consumes 4,550 kwh annually.<sup>5</sup>

By 2010, 69% of people living alone will be between 45 and 64 years old. The number of households in the U.S. is growing significantly. People living alone or together as an unmarried couple account for 1/3 of households.<sup>6</sup>

1. National Association of Home Builders, 2006 2. 2006 2nd Edition Demographia International Housing Affordability Survey  
3. Alliance to Save Energy 4. U.S. Department of Energy 5. Japan External Trade Organization, 2004 6. U.S. Dept. of Health and Human Services

The Environmental Leadership Program (elpnet.org) provided grant funds for Madison Environmental Group to hire Davison Architecture and Urban Design (davisonarch.com) to design the first two Casa Kit Homes.



[www.madisonenvironmental.com](http://www.madisonenvironmental.com)  
25 N. Pinckney St.  
Madison, WI 53703  
608-280-0800  
[sonya@madisonenvironmental.com](mailto:sonya@madisonenvironmental.com)